

# Viola Audition Scales

Scales should be played in even quarter notes using separate bows, with arpeggios. Students may use their music.

♩ = 88

## C Major 2 octave scale and arpeggio



7



## G Major 2 octave scale and arpeggio

14



20

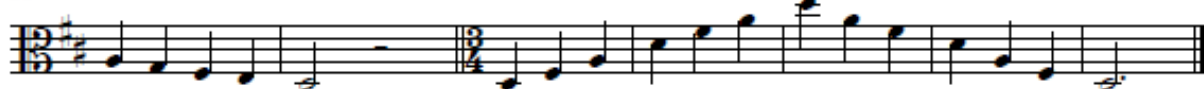


27

## D Major 2 octave scale and arpeggio



33



## B Flat Major 1 octave scale and arpeggio

